

# Shift Start Location Adjustment

Micah Blake McCurdy  
micah@hockeyviz.com

Rochester NY  
RIT Hockey Analytics Conference  
October 10, 2015

# The Idea

How can we account quantitatively for the fact that players don't start their shifts in the same places?

Punchline: It doesn't really matter.

# Existing Ideas

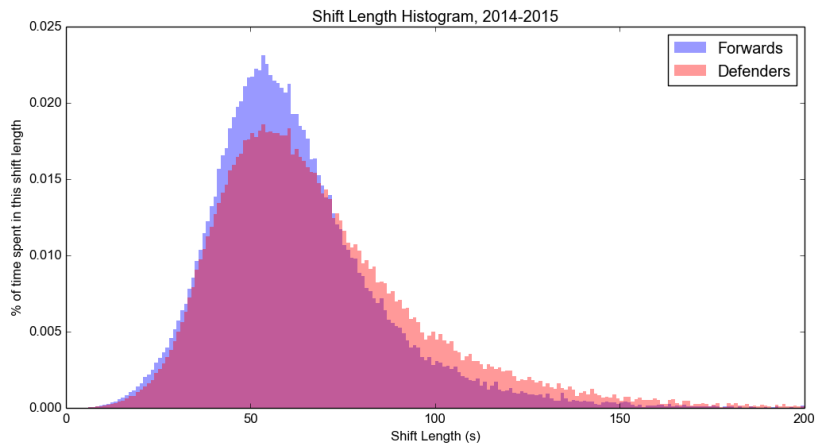
- ▶ Deleting a bunch of data.
  - ▶ Basically kicking puppies.
- ▶ Doing arithmetic with faceoff numbers.
  - ▶ Not enough faceoffs.
  - ▶ Too many faceoffs.

## Shift start locations

Shift Start Location	Overall	Forwards	Defenders
OZ	12%	13%	11%
NZ	18%	18%	17%
DZ	11%	11%	11%
On-the-fly	59%	58%	61%

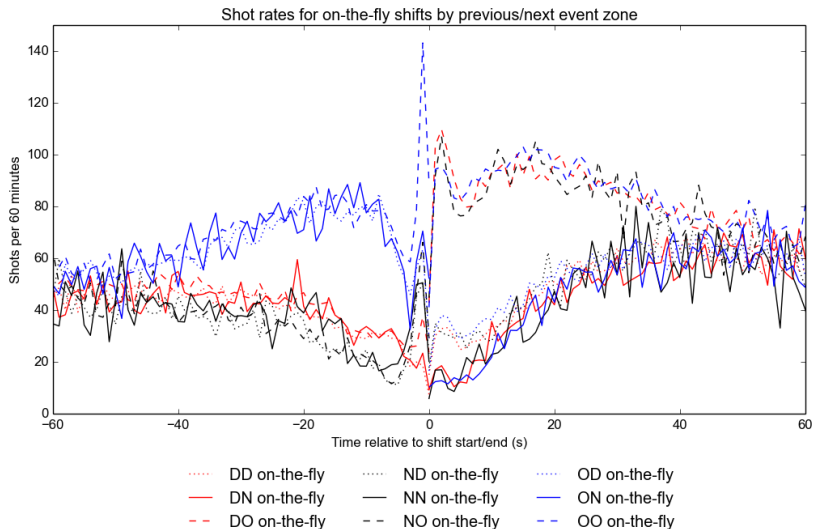
Not enough faceoffs: they only cover 40% of the shifts and around 50% of the 5v5 hockey.

# Shift Lengths

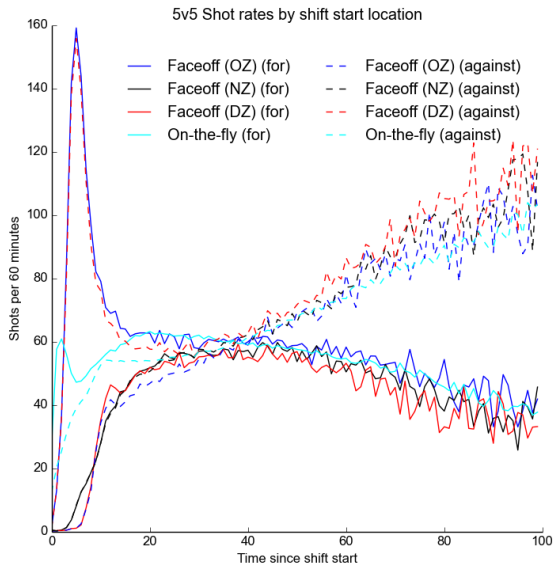


Too many faceoffs: not every faceoff starts a shift.

# Shots around On-the-fly Changes



# Shots for and against by shift start



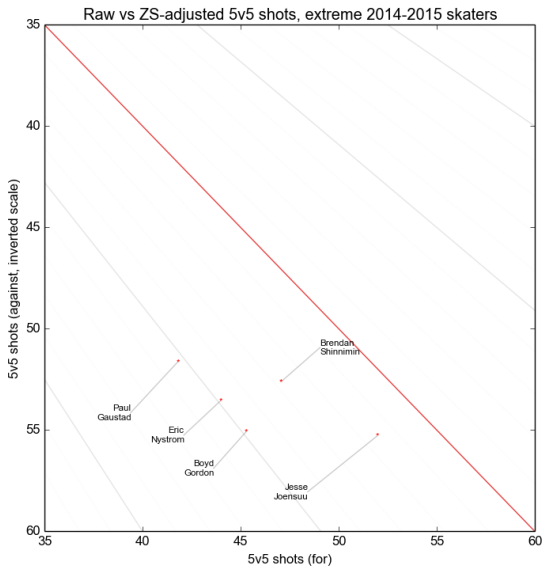
# Adjustment Coefficients

Shift Start Location	Shot For	Shot Against	
OZ	0.80	1.23	
NZ	1.28	1.18	<i>strange</i>
DZ	1.33	0.78	
On-the-fly	0.95	0.98	

Coefficient for a 5v5 event is the average of the 10 skater values.  
Rare is expensive, common is cheap.



# Most Extreme Adjustments



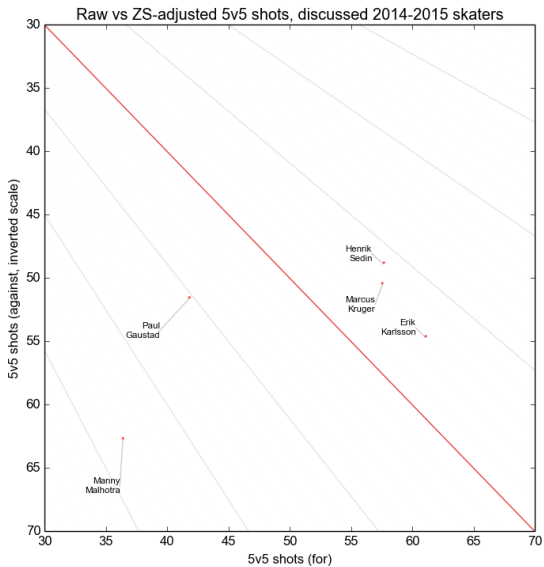
## Shift start locations for extreme players

Joensuu: 193 minutes at 5v5 in 20 games for Edmonton.

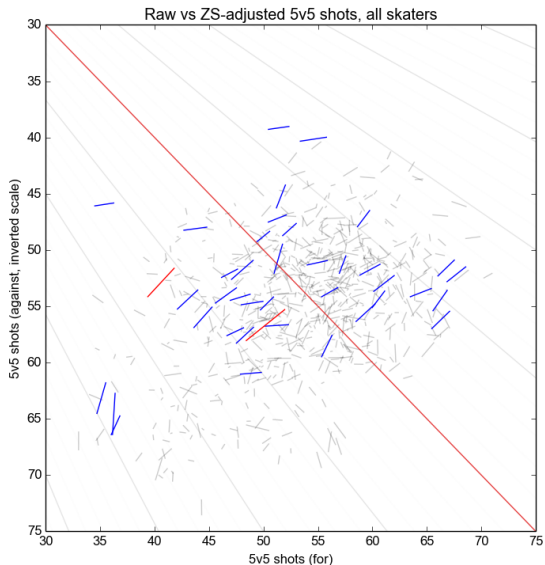
Shinnimin: 128 minutes at 5v5 in 12 games for Arizona.

Shift Start Location	Overall	Joensuu	Shinniman
OZ	12%	6%	17%
NZ	18%	14%	16%
DZ	11%	33%	6%
On-the-fly	59%	47%	61%

# Adjustments for oft-cited players



# Adjustments for season



5% of players with 100 minutes move more than 1% in shot share.

# Future Work

- ▶ Time-varying Adjustments
- ▶ Shadows: shift-end location patterns
- ▶ Combined adjustments

Thanks!

